

First Floor



Eve Gardens

Slice of paradise on earth!

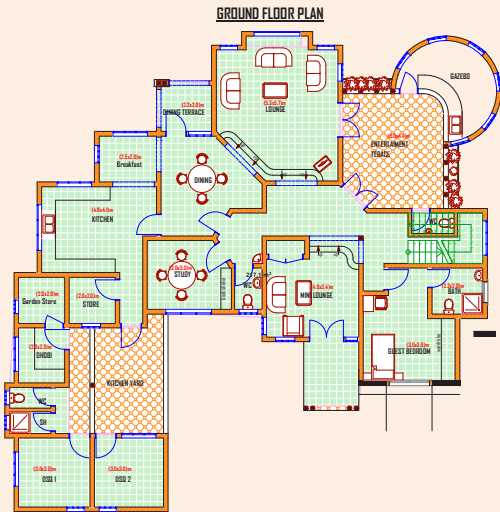
These artistically designed ten townhouses in Karen, off Ngong road near the KCB training centre personifies the life of paradise and are designed to provide unparalleled quality of life.

The 443 sqm is designed with an internal gazebo aimed to meet your individual needs by emphasizing both luxury and comfort.

The houses are oriented to capture the stunning views of Ngong hills and a nearby stream.

Features

- Sunken lounge opening into an entertainment area.
- Dining opening to own terrace.
- Spacious kitchen with a breakfast area and a store.
- Study room.
- Mini lounge for receiving guest.
- Guest ensuite.
- Family room upstairs opening into a balcony overlooking the entertainment area.
- 3 bedrooms upstairs all ensuites.
- Master ensuites with a bathtub and a walk-in-closet and a balcony.
- Laundry that accommodates both a washing machine and a dryer.
- 2 self contained DSQ with individual kitchenette.
- Underground tank.
- Borehole.
- 24hr security with electric fence along the main boundary wall.



Ground Floor